

GARDEN PRAIRIE FARM

Located South of Garden Prairie, IL

Section 1 Spring Twp. and Section 36 Bonus Township

Boone County, Illinois

Real Estate Taxes for 2022 = \$4,062.66

164.63 taxable acres, Approximately 108 Tillable Acres

Surety Indicates PI of 125.4 on Total Acres

Open Tenancy for 2025

Farm may be divided, contact agent for details

Priced at \$1,695,689 / \$10,300 per acre

Soils Include:

Comfrey
Marshan
Kidami
Selmass
Odell



Eric Bird, Managing Broker

1688 Brandywine Lane

Dixon, IL 61021

815-288-0998 Phone

815-284-0298 Fax

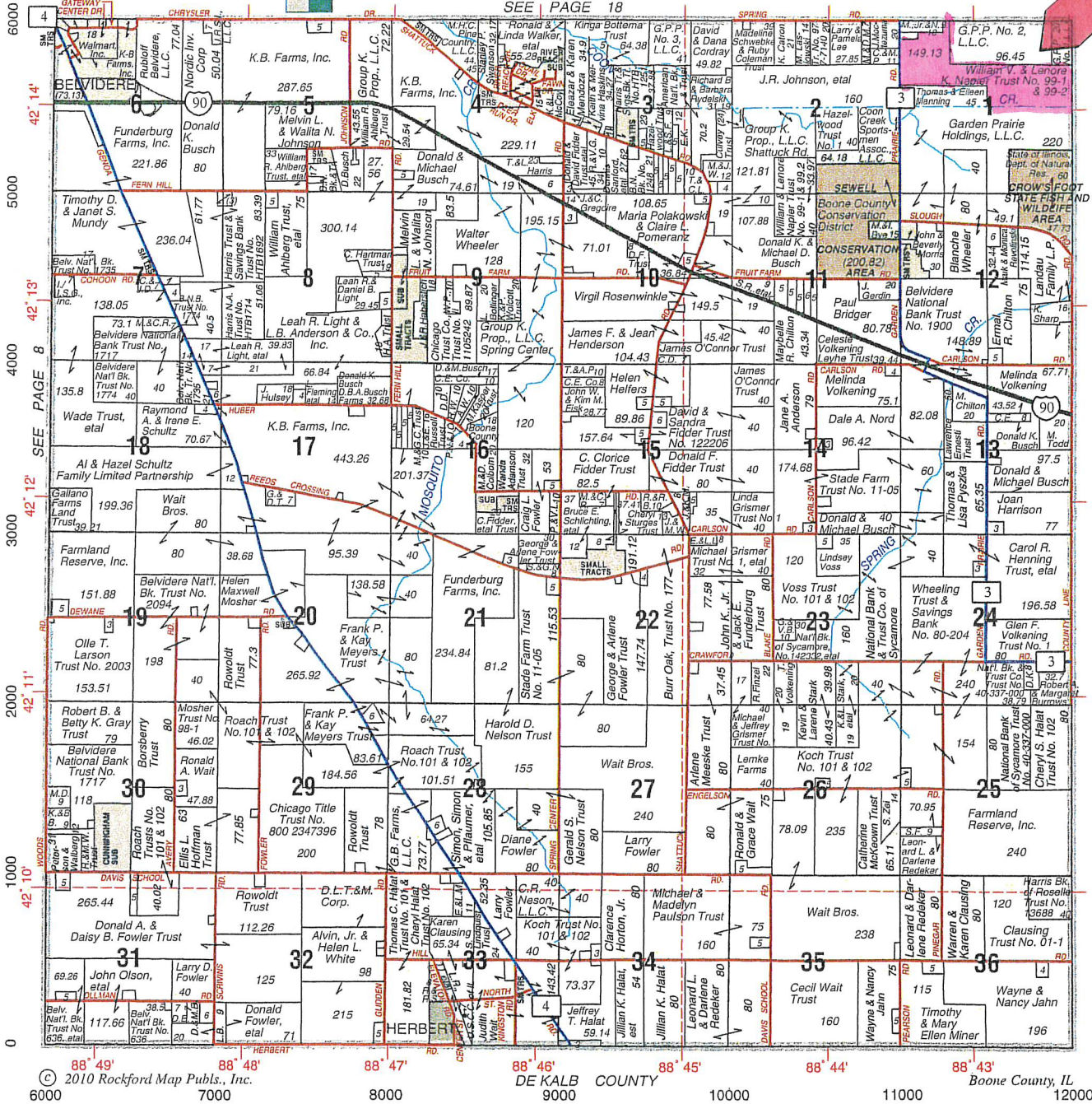
815-973-6768 Cell

ericbird2004@yahoo.com

SPRING

T.43N.-R.4E

SEE PAGE 18



© 2010 Rockford Map Pubs., Inc. DE KALB COUNTY Boone County, IL

(815) 923-2231

- INVESTMENT
- DEVELOPMENT
- COMMERCIAL



Fax: (815) 923-2281
Email: harmonyre@foxvalley.net

- COUNTRY HOMESITES
- FARMS
- COUNTRY ESTATES



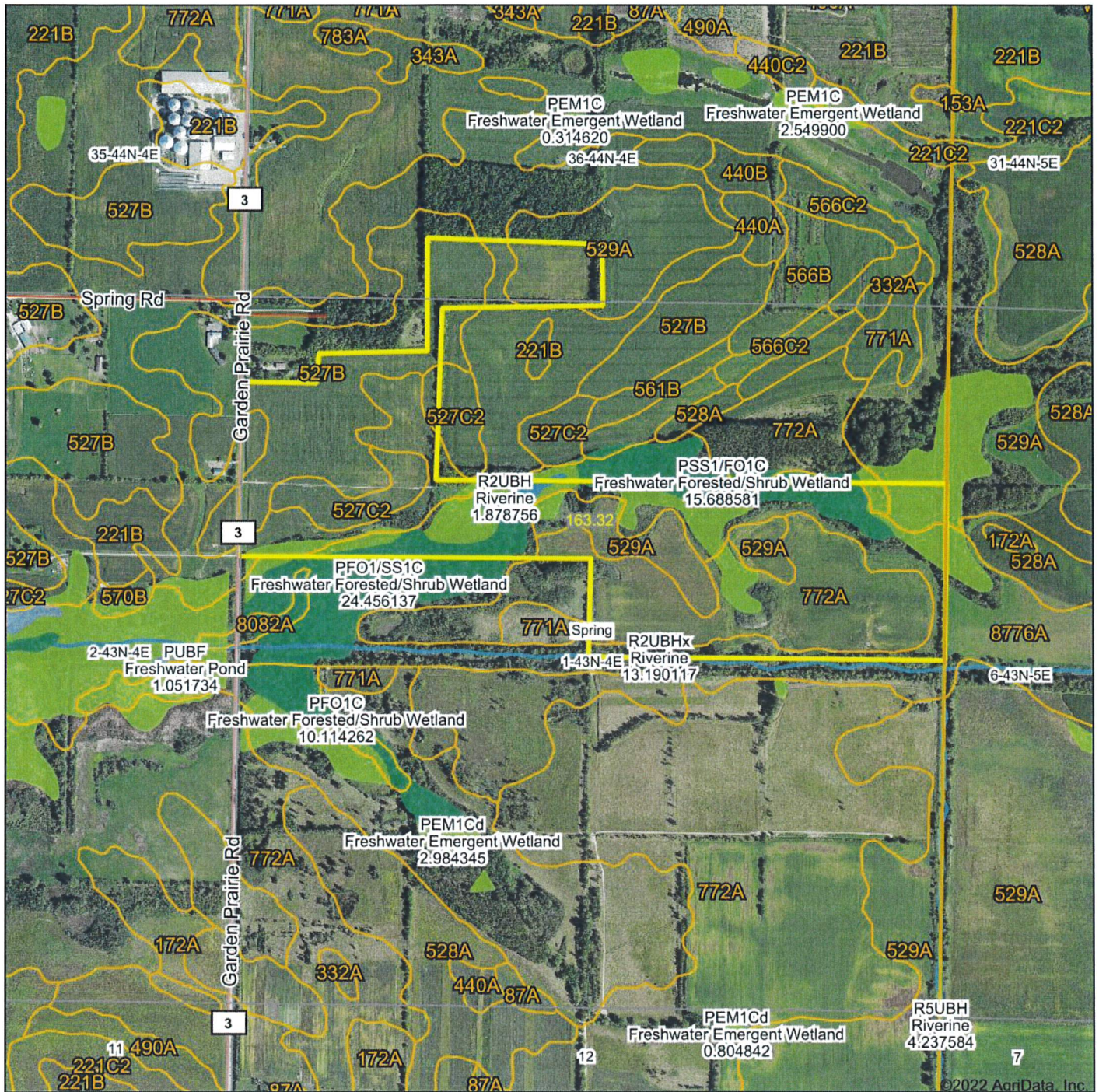
THE COUNTRYPOLITAN OFFICE

JACK FELDKAMP, Managing Broker

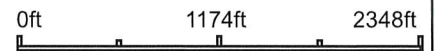
ROUTE 20 AND HARMONY ROAD - ONE MILE NORTH OF I-90 INTERCHANGE
16903 HARMONY ROAD • MARENGO, ILLINOIS 60152



Aerial Map



Map Center: 42° 14' 8.78, -88° 42' 59.5



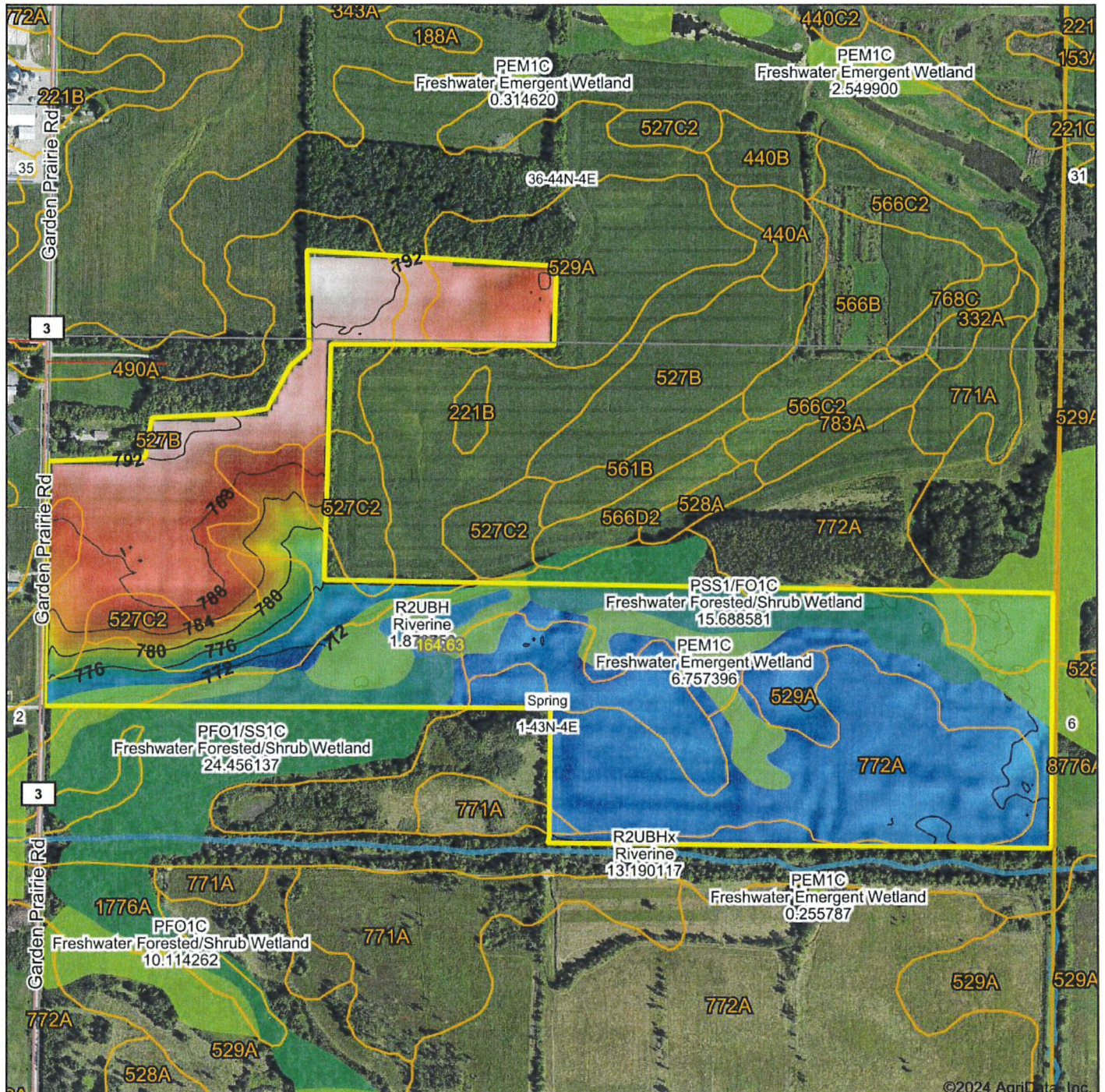
1-43N-4E
Boone County
Illinois



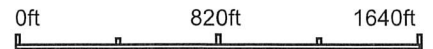
Maps Provided By:

 CUSTOMIZED ONLINE MAPPING
 © AgriData, Inc. 2021 www.AgriDataInc.com

Topography Hillshade



Source: USGS 10 meter dem
 Interval(ft): 4
 Min: 768.8
 Max: 793.7
 Range: 24.9
 Average: 776.5
 Standard Deviation: 8.17 ft

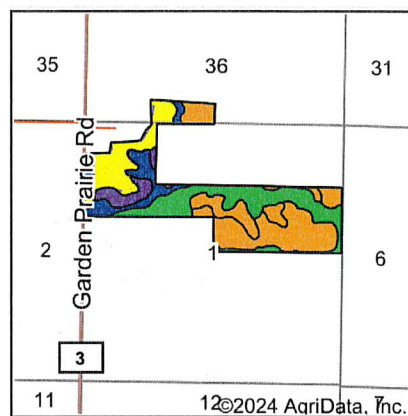
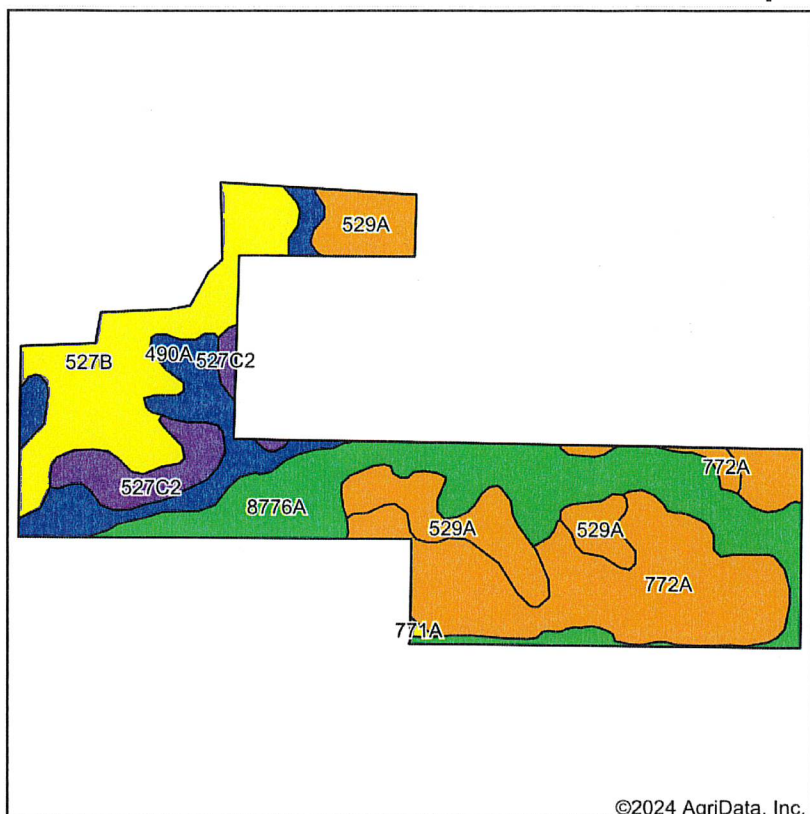


1-43N-4E
Boone County
Illinois

Boundary Center: 42° 14' 16.5, -88° 42' 55.1



Soils Map



State: **Illinois**
 County: **Boone**
 Location: **1-43N-4E**
 Township: **Spring**
 Acres: **164.63**
 Date: **1/28/2024**



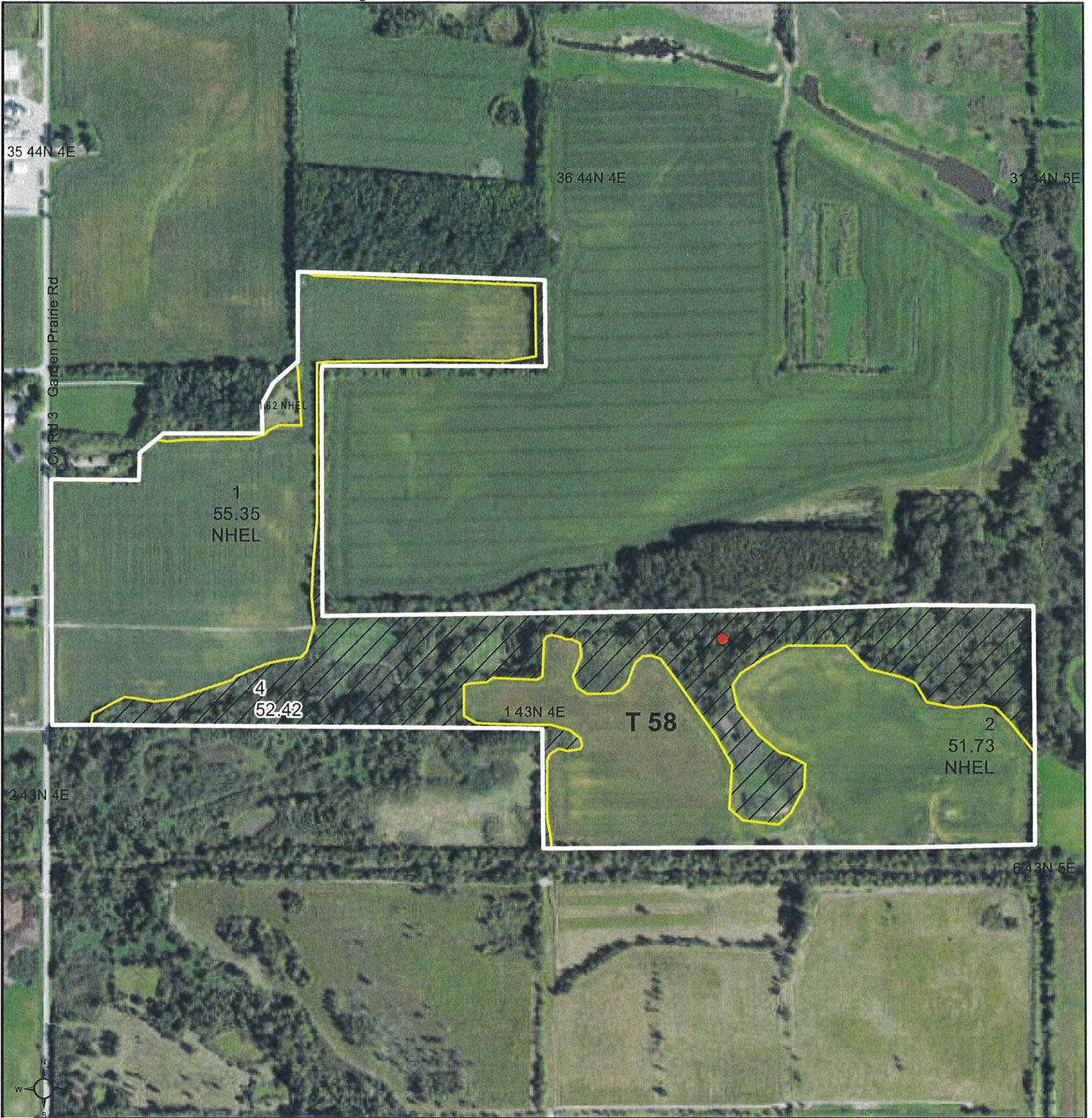
Soils data provided by USDA and NRCS.

©2024 AgriData, Inc.

Area Symbol: IL007, Soil Area Version: 17										
Code	Soil Description	Acres	Percent of field	Il. State Productivity Index Legend	Corn Bu/A	Soybeans Bu/A	Wheat Bu/A	Crop productivity index for optimum management	*n NCCPI Corn	*n NCCPI Soybeans
**8776A	Comfrey loam, 0 to 2 percent slopes, occasionally flooded	42.10	25.6%		**188	**62	**71	**141	65	52
**772A	Marshan loam, 0 to 2 percent slopes	40.58	24.6%		**163	**55	**65	**123	68	54
**527B	Kidami silt loam, 2 to 4 percent slopes	29.35	17.8%		**155	**50	**58	**114	75	72
**529A	Selmass loam, 0 to 2 percent slopes	24.76	15.0%		**163	**53	**64	**121	81	76
490A	Odell silt loam, 0 to 2 percent slopes	18.08	11.0%		176	56	68	129	75	68
**527C2	Kidami loam, 4 to 6 percent slopes, eroded	9.50	5.8%		**145	**46	**55	**106	67	63
**771A	Hayfield loam, 0 to 2 percent slopes	0.26	0.2%		**152	**50	**59	**114	67	49
Weighted Average					168.3	55.2	64.9	125.4	*n 71.1	*n 62.1

Table: Optimum Crop Productivity Ratings for Illinois Soil EFOTG are sourced from Bulletin 811 calculated Map Unit Base Yield Indices, and adjusted (Adj) for slope, erosion, flooding, and surface texture. Publication Date: 02-08-2023
 Crop yields and productivity (B811 EFOTG) are maintained at the following USDA web site: 2023 Illinois Soil Productivity and Yield Indices: <https://efotg.sc.egov.usda.gov/#/state/IL/documents/section=2&folder=52809>
 ** Base indexes from Bulletin 811 adjusted for slope, erosion, flooding, and surface texture according to the Il. Soils EFOTG
 *n: The aggregation method is "Weighted Average using all components"

Soils data provided by USDA and NRCS. Soils data provided by University of Illinois at Champaign-Urbana.

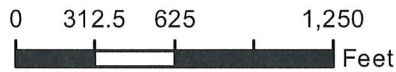


Common Land Unit

- Non-Cropland
- Cropland
- plss_a_il_WMAS
- CRP

Wetland Determination Identifiers

- Restricted Use
- Limited Restrictions
- Exempt from Conservation
- Compliance Provisions



2022 Program Year

Map Created December 06, 2021

Farm 2304

Tract 58

Tract Cropland Total: 108.70 acres

United States Department of Agriculture (USDA) Farm Service Agency (FSA) maps are for FSA Program administration only. This map does not represent a legal survey or reflect actual ownership; rather it depicts the information provided directly from the producer and/or National Agricultural Imagery Program (NAIP) imagery. The producer accepts the data 'as is' and assumes all risks associated with its use. USDA-FSA assumes no responsibility for actual or consequential damage incurred as a result of any user's reliance on this data outside FSA Programs. Wetland identifiers do not represent the size, shape, or specific determination of the area. Refer to your original determination (CPA-026 and attached maps) for exact boundaries and determinations or contact USDA Natural Resources Conservation Service (NRCS).

Abbreviated 156 Farm Record

Tract 47 Continued ...

Soybeans	3.23	0.00	40
TOTAL	69.24	0.00	

NOTES

Tract Number : 58
Description : H9-4 BONUS SEC. 36
FSA Physical Location : ILLINOIS/BOONE
ANSI Physical Location : ILLINOIS/BOONE
BIA Unit Range Number :
HEL Status : NHEL: No agricultural commodity planted on undetermined fields
Wetland Status : Wetland determinations not complete
WL Violations : None
Owners : LENORE K NAPIER
Other Producers : None
Recon ID : None

Tract Land Data

Farm Land	Cropland	DCP Cropland	WBP	WRP	CRP	GRP	Sugarcane
161.12	108.70	108.70	0.00	0.00	0.00	0.00	0.00
State Conservation	Other Conservation	Effective DCP Cropland	Double Cropped	MPL	EWP	DCP Ag. Rel Activity	Broken From Native Sod
0.00	0.00	108.70	0.00	0.00	0.00	0.00	0.00

DCP Crop Data

Crop Name	Base Acres	CCC-505 CRP Reduction Acres	PLC Yield
Corn	104.56	0.00	130
Soybeans	4.14	0.00	40
TOTAL	108.70	0.00	

NOTES

In accordance with Federal civil rights law and U.S. Department of Agriculture (USDA) civil rights regulations and policies, the USDA, its Agencies, offices, and employees, and institutions participating in or administering USDA programs are prohibited from discriminating based on race, color, national origin, religion, sex, gender identity (including gender expression), sexual orientation, disability, age, marital status, family/parental status, income derived from a public assistance program, political beliefs, or reprisal or retaliation for prior civil rights activity, in any program or activity conducted or funded by USDA (not all bases apply to all programs). Remedies and complaint filing deadlines vary by program or incident.

Persons with disabilities who require alternative means of communication for program information (e.g., Braille, large print, audiotape, American Sign Language, etc.) should contact the responsible Agency or USDA's TARGET Center at (202) 720-2600 (voice and TTY) or contact USDA through the Federal Relay Service at (800) 877-8339. Additionally, program information may be made available in languages other than English.

To file a program discrimination complaint, complete the USDA Program Discrimination Complaint Form, AD-3027, found online at http://www.ascr.usda.gov/complaint_filing_cust.html and at any USDA office or write a letter addressed to USDA and provide in the letter all of the information requested in the form. To request a copy of the complaint form, call (866) 632-9992. Submit your completed form or letter to USDA by: (1) mail: U.S. Department of Agriculture Office of the Assistant Secretary for Civil Rights 1400 Independence Avenue, SW Washington, D.C. 20250-9410; (2) fax: (202) 690-7442; or (3) e-mail: program.intake@usda.gov. USDA is an equal opportunity provider, employer, and lender.